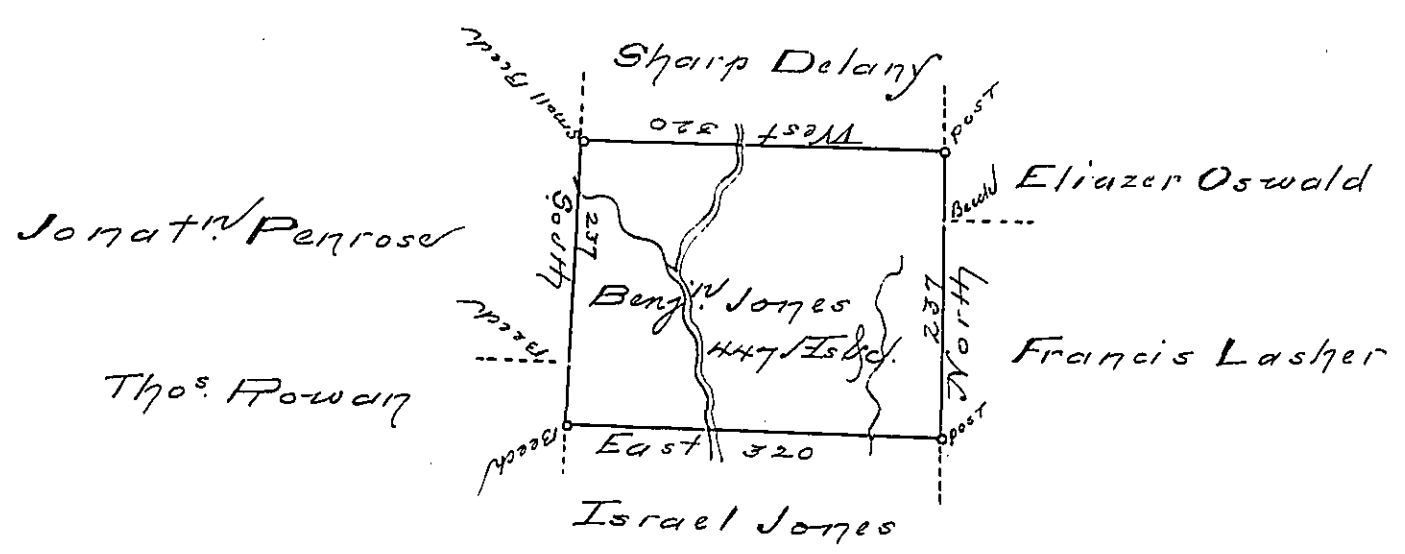


2-5-272



Pg 136

Draft of a tract of land called  
 Situated on the waters of Wyalusing Creek joining  
 land surveyed for Sharp Delany & others in Luzerne  
 County containing four Hundred & forty seven  
 Acres & allowance of six 1/2 Cent for roads &c.

Surveyed for Benj. Jones the 20<sup>th</sup> Day of  
 October 1789 in pursuance of a Warrant  
 Dated the 15<sup>th</sup> Day of April 1788.

To Daniel Brodhead Esq. } by Wm. Gray D.D.  
 Suror. Genl.

IN TESTIMONY that the above is a copy of the original remaining on file in the  
 Department of Internal Affairs of Pennsylvania, made con-  
 formably to an Act of Assembly approved the 16th day of  
 February, 1833, I have hereunto set my Hand and caused  
 the Seal of said Department to be affixed at Harrisburg, this  
 — third — day of — March — 1896.

James W. Fatta  
 Secretary of Internal Affairs.